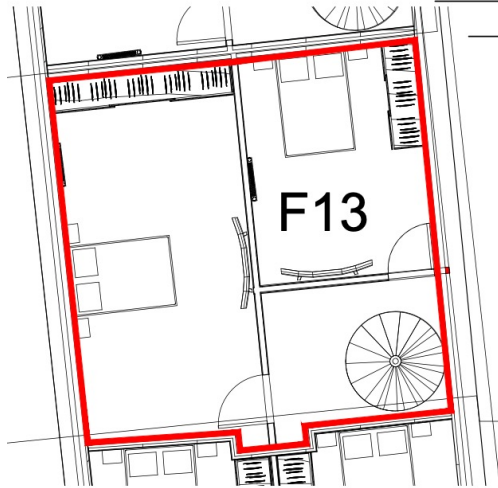
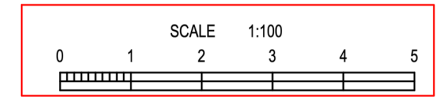


SECOND FLOOR PLOT 13
(SCALE 1:100)



THIRD FLOOR PLOT 13
(SCALE 1:100)



**RESIDENCE 13
FLOOR 2**

Demised Area:
110.07 m²
1191 sqft

2 Bedroom Apartment
Open Plan Lounge
Open Plan Kitchen
1 Bathroom

All Dimensions Are Approximate And Subject To Normal Construction Variances And Tolerances. Plans and Dimensions May Contain Minor Variations From Floor To Floor. The Square Footage On This Floor Plan Exceeds The Usable Square Footage.

Developer: Nicholson (Beechams) Limited.

Design: Nicholson Design & Build Limited

Related Company: Nicholson (No.3) Limited

Sales & Marketing: The Nicholson Agency Limited

Property Address: Nicholson Residence, Beechams Building, Water Street St Helens WA10 1PP

Developer Reserves The Right To Make Changes In Accordance With The Terms Of The Offering Plan.